

CMS series Cone Magnetic Separator protects processing machinery and purifies granular and powdered raw materials by capturing tramp iron contaminants in vertical flow systems.

This magnetic separator is used in the grain, powder, bulk, plastic, and chemical industries. Since the cone magnet is positioned directly in the material flow path, the material must be free-flowing and granular to ensure smooth operation and eliminate the risk of bridging. The CMS Separator is designed for gravity separation and consists of a round pipe-type housing with a magnetic core mounted on hinges inside. The housing is equipped with a door to provide easy access to the cone magnet. The conical top of the magnet evenly distributes the material flow around the magnetic core. The permanent magnetic core is used in manual cleaning designs where manual cleaning is feasible. In self-cleaning designs, an electromagnetic core replaces the permanent one, the housing outlet features a flap gate that allows for the discharge of captured

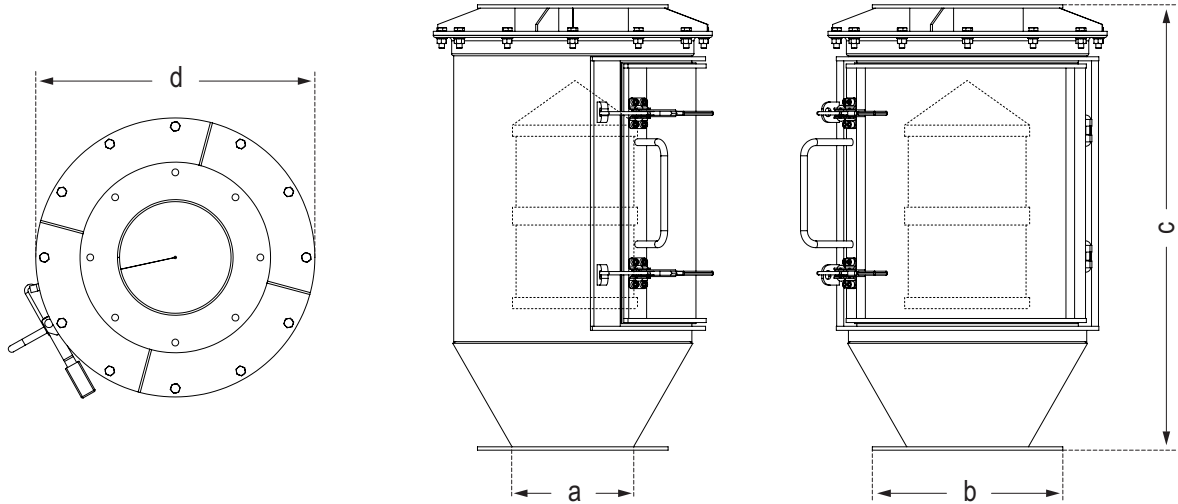
materials during cleaning operations. A standard sanitary model is available for the CMS separator, allowing it to be seamlessly integrated into the piping system after installation. A flange model is available upon request. The housing can be made from either carbon steel or stainless steel, depending on the requirement. Guide strips inside the housing ensure the material is evenly dispersed for thorough contact with the magnetic core. The permanent magnetic Core could be made by ceramic or neodymium elements depending on the application.

Feature and application:

- High-strength ceramic or optional rare-earth magnet elements are used in the permanent core type.
- No power consumption in the permanent core type
- Low maintenance cost in the permanent core type
- Compact design
- No operative cost in the permanent core type
- No failure in the permanent core type
- Easily mounted
- Uniform and powerful
- Less expensive to purchase and operate in the permanent core type
- Fully stabilized and non-deteriorating
- Magnetic core mounted on special hinges for easier cleaning.
- Leading Teflon plates
- Sanitary Inlet/outlet or flanges type
- Available electromagnetic core for self-cleaning separator
- Available special design for pneumatic pressure lines



CMS



Model	Overall Dimensions				Nominal Capacity*	Total Weight Approx.
	a	b	c	d		
	mm	mm	mm	mm	ton/hr	kg
CMS 100	100	180	550	220	6	40
CMS 150	150	230	600	275	20	68
CMS 200	200	280	650	345	50	105
CMS 250	250	330	750	430	80	155
CMS 300	300	400	850	485	100	210
CMS 400	400	500	950	620	150	345
CMS 500	500	600	1,100	780	200	610

* Applies to dry and granular materials. For meals degrades to 50% of nominal rate.

